

# **\$519,900 - 256 Waterford Heath, Chestermere**

---

MLS® #A2183346

**\$519,900**

3 Bedroom, 3.00 Bathroom, 1,214 sqft

Residential on 0.07 Acres

NONE, Chestermere, Alberta

Immediate Possession!! Welcome to this stunning single detached home, where modern elegance meets functional design. Featuring a convenient side entrance and an array of high-end finishes, this property is ideal for families and entertaining.

## **Key Features:**

**Elegant Engineered Hardwood Floors:** The main floor boasts beautiful engineered hardwood flooring, adding warmth and sophistication to your living space.

**Spacious 9 ft Ceilings:** Enjoy an open and airy atmosphere with impressive 9-foot ceilings that enhance the overall design.

**Grand 8 ft Doors:** Stylish 8-foot doors on the main floor provide a grand entry and seamless flow between rooms.

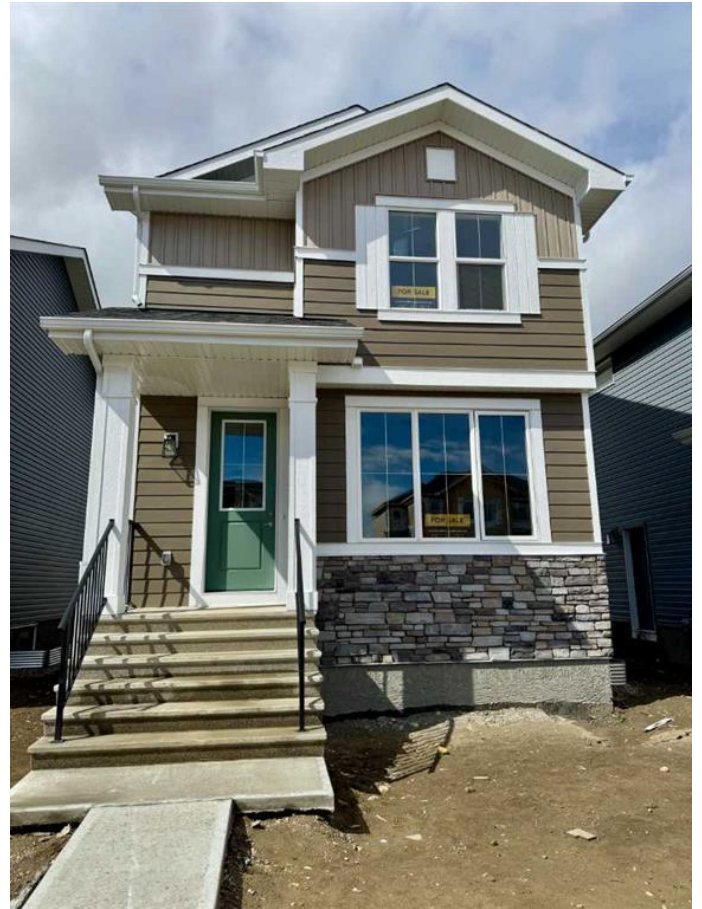
**Sophisticated Wrought Iron Railings:** Tasteful wrought iron railings add a touch of class and safety to the home.

**Cozy Electric Fireplace:** Relax in the inviting living area, featuring a contemporary electric fireplace that creates a warm ambiance.

**Master Bedroom Retreat:** The spacious master suite includes a luxurious ensuite with a stand-up tiled shower and a generous walk-in closet for ultimate convenience.

**Two Well-Sized Bedrooms:** Two additional bedrooms offer ample space for family or guests, making this home perfect for any lifestyle.

**Gourmet Kitchen with Quartz Countertops:**



Enjoy modern quartz countertops and undermount sinks that provide both style and functionality in the kitchen and bathrooms. Practical Built-In Hooks and Shelf: The rear entry features built-in hooks and a shelf, perfect for keeping your belongings organized. Art Niche: Showcase your unique style with an art niche, ideal for displaying your favorite pieces.

Rear pad: 20x20 concrete pad for future garage.

This exceptional home perfectly balances modern living with elegant design. Donâ€™t miss out on the chance to make it yours! Contact us today to schedule your private showing!

Built in 2025

### Essential Information

MLS® #	A2183346
Price	\$519,900
Bedrooms	3
Bathrooms	3.00
Full Baths	2
Half Baths	1
Square Footage	1,214
Acres	0.07
Year Built	2025
Type	Residential
Sub-Type	Detached
Style	2 Storey
Status	Active

### Community Information

Address	256 Waterford Heath
Subdivision	NONE
City	Chestermere
County	Chestermere
Province	Alberta



Postal Code T1X 2Z6

### Amenities

Parking Spaces 2  
Parking Parking Pad

### Interior

Interior Features High Ceilings, Kitchen Island, Quartz Counters, Separate Entrance, Walk-In Closet(s)  
Appliances Dishwasher, Electric Stove, Microwave Hood Fan, Refrigerator  
Heating Forced Air  
Cooling None  
Fireplace Yes  
# of Fireplaces 1  
Fireplaces Electric  
Has Basement Yes  
Basement Full, Unfinished

### Exterior

Exterior Features None  
Lot Description Back Lane, City Lot, Level, Rectangular Lot, Street Lighting  
Roof Asphalt Shingle  
Construction Vinyl Siding, Mixed  
Foundation Poured Concrete

### Additional Information

Date Listed May 21st, 2025  
Days on Market 12  
Zoning R-1PRL

### Listing Details

Listing Office First Place Realty

Data is supplied by Pillar 9â„¢ MLSÂ® System. Pillar 9â„¢ is the owner of the copyright in its MLSÂ® System. Data is deemed reliable but is not guaranteed accurate by Pillar 9â„¢. The trademarks MLSÂ®, Multiple Listing ServiceÂ® and the associated logos are owned by The Canadian Real Estate Association (CREA) and identify the quality of services provided by real estate professionals who are members of CREA. Used under license.