

# \$550,000 - 22 Greenview Crescent, Strathmore

MLS® #A2212808

**\$550,000**

4 Bedroom, 2.00 Bathroom, 2,076 sqft

Residential on 0.21 Acres

Green Meadow, Strathmore, Alberta

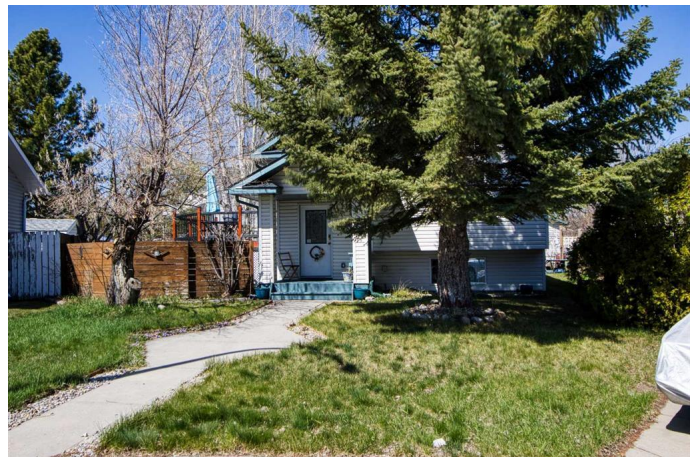
This charming three-bedroom bi-level home is tucked away on a quiet cul-de-sac in the heart of Greenview Meadows. Situated on a massive pie-shaped lot, the property offers an oversized, heated double detached garage, dedicated RV parking, a huge garden area, and plenty of space to build a second garage, workshop, or more.

The home itself features a fully developed lower level with a separate entrance â€” perfect for extended family, guests, or potential rental income.

Ideally located just minutes from Brent Boulevard, youâ€™ll enjoy quick access to a wide range of community amenities. Nearby are several schools including Westmount Elementary, Strathmore High School, Sacred Heart Academy, and Holy Cross Collegiate. The regional hospital is also close by, along with fantastic recreation options such as the Strathmore Family Centre Arena, Aquatic Centre, and Motor Products Sports Centre. Shopping, dining, and everyday services are just minutes away in downtown Strathmore and nearby retail centres.

This is a rare opportunity that blends space, functionality, and location â€” perfect for families, hobbyists, or anyone looking to put down roots in a vibrant community.

FEATURES INCLUDE: -- VAULTED ceilings  
-- TWO fireplaces -- SEPERATE entrance to



basement -- HUGE south/westerly deck --  
UPGRADED mechanicals -- AIR conditioning  
-- PLUS newly shingled in 2024.

Donâ€™t miss out on this very special home  
and very special property. REACH out to your  
favorite Real Estate Agent --orâ€™come by our  
OPEN House Saturday and Sunday from 1:30  
PM to 4:00 PM. \*\*\* DONâ€™T miss out on  
this one â€“ come and CHECK-it-OUT!!

Built in 1995

**Essential Information**

MLS® #	A2212808
Price	\$550,000
Bedrooms	4
Bathrooms	2.00
Full Baths	2
Square Footage	2,076
Acres	0.21
Year Built	1995
Type	Residential
Sub-Type	Detached
Style	Bi-Level
Status	Active

**Community Information**

Address	22 Greenview Crescent
Subdivision	Green Meadow
City	Strathmore
County	Wheatland County
Province	Alberta
Postal Code	T1P 1M1

**Amenities**

Parking Spaces	2
Parking	Double Garage Detached, Heated Garage, RV Access/Parking
# of Garages	2

## Interior

Interior Features	Bookcases, Built-in Features, High Ceilings, Kitchen Island, See Remarks, Storage, Vaulted Ceiling(s)
Appliances	Dishwasher, Electric Stove, Refrigerator, Washer/Dryer Stacked
Heating	Forced Air
Cooling	Other
Fireplace	Yes
# of Fireplaces	2
Fireplaces	Gas, Wood Burning
Has Basement	Yes
Basement	Exterior Entry, Finished, Full, Walk-Out

## Exterior

Exterior Features	Fire Pit, Garden, Storage
Lot Description	Back Yard, Cul-De-Sac, Front Yard, Landscaped, Lawn, Pie Shaped Lot, See Remarks, Conservation
Roof	Asphalt Shingle
Construction	Vinyl Siding
Foundation	Poured Concrete

## Additional Information

Date Listed	May 2nd, 2025
Days on Market	12
Zoning	R1

## Listing Details

Listing Office	Real Broker
----------------	-------------

Data is supplied by Pillar 9â„¢ MLS® System. Pillar 9â„¢ is the owner of the copyright in its MLS® System. Data is deemed reliable but is not guaranteed accurate by Pillar 9â„¢. The trademarks MLS®, Multiple Listing Service® and the associated logos are owned by The Canadian Real Estate Association (CREA) and identify the quality of services provided by real estate professionals who are members of CREA. Used under license.