

\$415,000 - 34 Tararidge Circle Ne, Calgary

MLS® #A2218018

\$415,000

3 Bedroom, 3.00 Bathroom, 990 sqft

Residential on 0.00 Acres

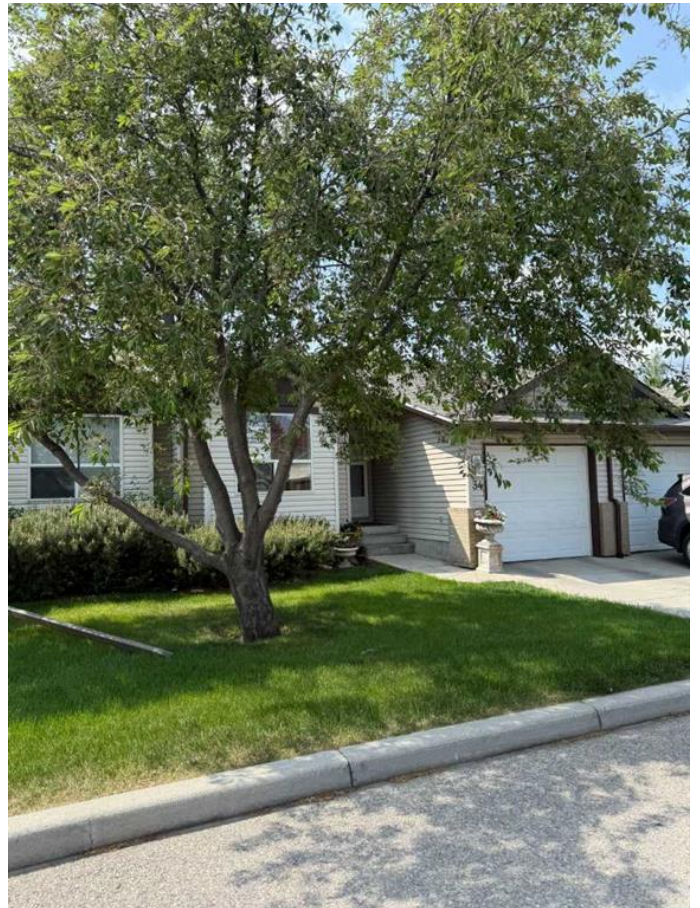
Taradale, Calgary, Alberta

Fully Renovated & Ideally Located!

This beautifully updated bungalow offers over 1,900+ sq ft of thoughtfully designed living space with minimal stairs for easy access. The bright, open-concept layout with vaulted ceilings, is perfect for both everyday living & entertaining. Enjoy a spacious living rm with a cozy gas fireplace that flows seamlessly into the dining area & the lg kitchen peninsula with seating is perfect for entertaining or casual meals. The upgraded kitchen has quartz countertops, newer SS appliances (2022), granite sinks with garburator & touch faucet. The cabinetry has soft-close hardware & there's a convenient walk-in pantry. The primary bedrm includes a walk-in closet & stylish 4 pc ensuite finished with granite accents. A 2nd bedrm, another 3-pc bath & convenient laundry closet complete the main floor.

Additional highlights include a newly installed composite deck (2024), a rare attached single-car garage & a fully developed lower level. The basement adds even more living space with a lg family rm, lg 3rd bedrm, another 3-pc bath & a sizeable hobby/games rm with plenty of extra storage space! A new central vacuum system was added to both levels in 2024, for added convenience.

This well-maintained complex has a Quiet Location, Low Condo Fees & Unbeatable Convenience! Tucked away from busy streets this unit backs onto a lovely green space. The Taradale shopping plaza is just



steps awayâ€”providing convenient access to bussing, groceries, dining, gas, banking & healthcare services.

This fully reno'd, turn-key bungalow combines comfort, style & everyday convenience!

Bungalow Units of this size are rarely available...so DON'T miss out on this fantastic opportunity!

Built in 1998

Essential Information

| | |
|----------------|---------------|
| MLS® # | A2218018 |
| Price | \$415,000 |
| Bedrooms | 3 |
| Bathrooms | 3.00 |
| Full Baths | 3 |
| Square Footage | 990 |
| Acres | 0.00 |
| Year Built | 1998 |
| Type | Residential |
| Sub-Type | Row/Townhouse |
| Style | Bungalow |
| Status | Active |

Community Information

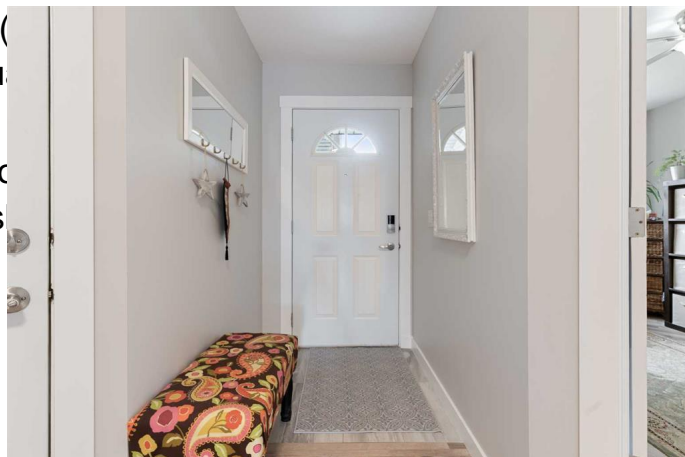
| | |
|-------------|------------------------|
| Address | 34 Tararidge Circle Ne |
| Subdivision | Taradale |
| City | Calgary |
| County | Calgary |
| Province | Alberta |
| Postal Code | T3J 3W4 |

Amenities

| | |
|----------------|----------------------------------|
| Amenities | Park, Visitor Parking |
| Parking Spaces | 2 |
| Parking | Driveway, Single Garage Attached |
| # of Garages | 1 |

Interior

| | |
|-------------------|---|
| Interior Features | Breakfast Bar, Ceiling Fan(Open Floorplan, Pantry, Qu Ceiling(s) |
| Appliances | Dishwasher, Garage Contro Hood Fan, Refrigerator, Was |
| Heating | Forced Air, Natural Gas |
| Cooling | None |
| Fireplace | Yes |
| # of Fireplaces | 1 |
| Fireplaces | Gas, Living Room, Mantle, Blower Fan |
| # of Stories | 1 |
| Has Basement | Yes |
| Basement | Finished, Full |



Exterior

| | |
|-------------------|---|
| Exterior Features | Courtyard, Private Entrance |
| Lot Description | Backs on to Park/Green Space, Front Yard, Lawn, Level, No Neighbours Behind |
| Roof | Asphalt |
| Construction | Vinyl Siding, Wood Frame |
| Foundation | Poured Concrete |

Additional Information

| | |
|----------------|---------------|
| Date Listed | May 8th, 2025 |
| Days on Market | 39 |
| Zoning | R-2M |

Listing Details

| | |
|----------------|----------------------------------|
| Listing Office | Royal LePage Mission Real Estate |
|----------------|----------------------------------|

Data is supplied by Pillar 9â„¢ MLSÂ® System. Pillar 9â„¢ is the owner of the copyright in its MLSÂ® System. Data is deemed reliable but is not guaranteed accurate by Pillar 9â„¢. The trademarks MLSÂ®, Multiple Listing ServiceÂ® and the associated logos are owned by The Canadian Real Estate Association (CREA) and identify the quality of services provided by real estate professionals who are members of CREA. Used under license.