

# \$1,125,000 - 18 Ridge View Place, Cochrane

MLS® #A2224166

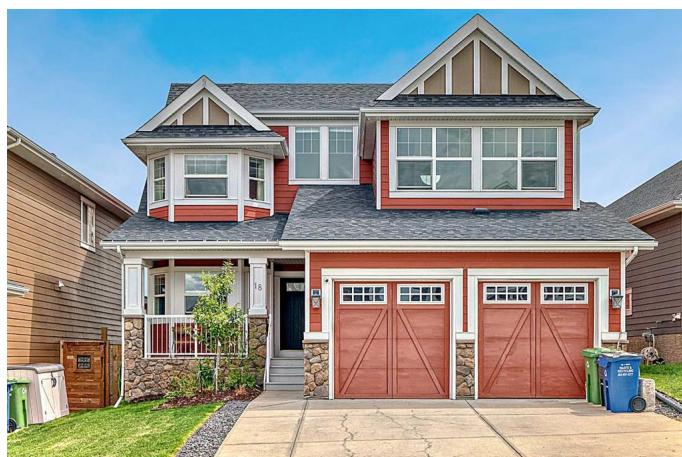
**\$1,125,000**

5 Bedroom, 5.00 Bathroom, 3,079 sqft

Residential on 0.12 Acres

River Song, Cochrane, Alberta

Welcome to 18 Ridge View Place, one of the most beautiful streets in the lovely community of RIVERSONG. Such GREAT VALUE (shop and compare price per sq foot) for this home with over 4400 square feet of developed space, boasting 5 BEDROOMS (each with it's own walk-in closet) and 5 BATHROOMS - including 2 PRIVATE ENSUITES. Location is prime, backing onto a NATURAL RAVINE, with no homes directly behind you. You'll love the abundant, large windows with gorgeous VIEWS from all 3 levels. The MAIN floor welcomes you with a large FRONT OFFICE, a Formal Dining Room and Living Room. You will be drawn in with the views. This beautiful kitchen is spacious and elegant, with a large ISLAND and quartz countertops, an Electric Cooktop and CHEF's hood fan, a built-in oven, and an oversized fridge with DOUBLE DOORS. Enjoy the full length BALCONY for your peaceful, outdoor viewing pleasure. The kitchen wraps around to a BUTLER'S PANTRY for prepping and coffee & beverage station, plus another large walk-in PANTRY for all your food storage needs. A seamless transition to the MUD ROOM with custom built-in shelving/cubicles, and the well sized Garage. The UPPER level has high/vaulted ceilings, a bright & sunny LAUNDRY ROOM, a full main bathroom, and 4 Bedrooms. PRIMARY BEDROOM is huge, with a lovely 5 piece ENSUITE, including a rainfall shower head and jetted tub - VIEWS from here are



brehtaking!!! Youâ€™ll love the massive, walk-in closet with CUSTOM BUILT-INS, a CLOSET ISLAND, and natural light. Uniquely, the BONUS ROOM has been professionally converted into a 5th BEDROOM, with itâ€™s own PRIVATE ENSUITE and WALK-IN closet. This would be an ideal Nanny quarters, teenagers or guests. The LOWER, WALK-OUT level is 1357 square feet - mostly wide open FLEX space, with a cozy, WOOD-BURNING fireplace, another LARGE BEDROOM and full BATHROOM, and a mechanical/utility room with abundant STORAGE space. FRENCH DOORS lead out to the PATIO where you can enjoy the HOT TUB and NATURE at itâ€™s best! This well-built home has HARDWOOD flooring, tile, carpet and QUARTZ countertops (with exception of 2nd ensuite) throughout. It is wired for SURROUND SOUND, has CENTRAL AIR Conditioning on Upper level, LOTS of STORAGE and linen closets, HIGH, knockdown ceilings, Pot Lights, two FIREPLACES â€“ one gas and the other wood-burning. A 24â€™ x 20' Double GARAGE with Hanging Storage Racks & Composite siding. The Yard is fully FENCED, and is nicely landscaped, with apple trees and fruit shrubs. This is a large, family home with a TON of STORAGE! Walking distance to Bow Valley High School and future K-8 School in Rivercrest (projected for Sept 2027). Walking and biking path system right out the back yard. Close proximity to Spray Lakes Sawmills Recreation Center!

Built in 2012

### **Essential Information**

MLS® #	A2224166
Price	\$1,125,000
Bedrooms	5

Bathrooms	5.00
Full Baths	4
Half Baths	1
Square Footage	3,079
Acres	0.12
Year Built	2012
Type	Residential
Sub-Type	Detached
Style	2 Storey
Status	Active

### Community Information

Address	18 Ridge View Place
Subdivision	River Song
City	Cochrane
County	Rocky View County
Province	Alberta
Postal Code	T4C 0P9

### Amenities

Parking Spaces	4
Parking	Double Garage Attached
# of Garages	2

### Interior

Interior Features	Closet Organizers, High Ceilings, Jetted Tub, Kitchen Island, Low Flow Plumbing Fixtures, Pantry, Quartz Counters, Storage, Vaulted Ceiling(s), Vinyl Windows
Appliances	Dishwasher, Range Hood, Refrigerator, Washer/Dryer, Central Air Conditioner, Built-In Oven, Electric Cooktop, Wine Refrigerator
Heating	Fireplace(s), Forced Air, Natural Gas
Cooling	Central Air
Fireplace	Yes
# of Fireplaces	2
Fireplaces	Gas, Living Room, Mantle, Stone, Wood Burning, Basement
Has Basement	Yes
Basement	Finished, Full, Walk-Out

### Exterior

Exterior Features	Balcony, BBQ gas line
Lot Description	Backs on to Park/Green Space, Landscaped, Views, Fruit Trees/Shrub(s), No Neighbours Behind
Roof	Asphalt Shingle
Construction	Stone, Composite Siding
Foundation	Poured Concrete

### **Additional Information**

Date Listed	May 23rd, 2025
Days on Market	95
Zoning	R-LD

### **Listing Details**

Listing Office	TREC The Real Estate Company
----------------	------------------------------

Data is supplied by Pillar 9â„¢ MLS® System. Pillar 9â„¢ is the owner of the copyright in its MLS® System. Data is deemed reliable but is not guaranteed accurate by Pillar 9â„¢. The trademarks MLS®, Multiple Listing Service® and the associated logos are owned by The Canadian Real Estate Association (CREA) and identify the quality of services provided by real estate professionals who are members of CREA. Used under license.