

# \$560,000 - 6 Aspen Landing, Strathmore

MLS® #A2234290

## \$560,000

4 Bedroom, 4.00 Bathroom, 1,866 sqft

Residential on 0.16 Acres

Aspen Creek, Strathmore, Alberta

For more information, please click [Brochure button](#).

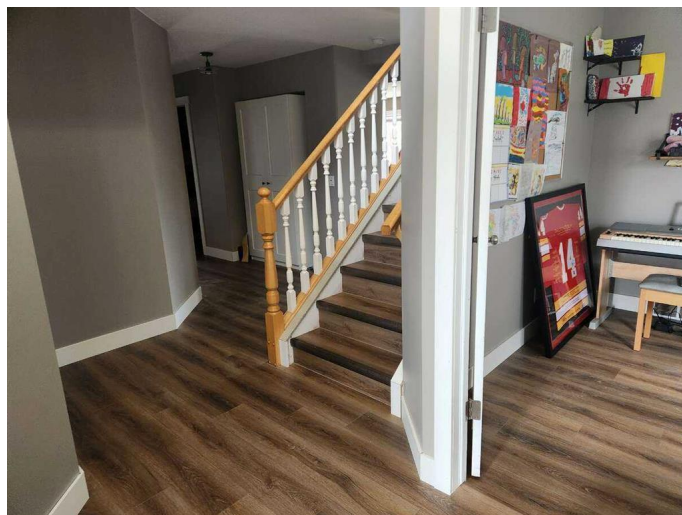
This two-storey home, full of natural light, is perfectly situated in a welcoming, family-friendly communityâ€”backing onto peaceful green space, a scenic canal, and walking trails. The main floor features an open-concept kitchen and living area, ideal for everyday living and entertaining. You'll also find convenient main-floor laundry and a stylish half-bath. The den area is perfect for a home office. Upstairs, there are three generously sized bedrooms, including a spacious primary suite complete with a beautiful ensuite bathroom. The fully finished basement adds even more living space, offering a large rec room and a fourth bedroom.

Enjoy year-round comfort with a cozy gas fireplace in the winter and central A/C to keep you cool through the summer months.

Built in 2001

## Essential Information

MLS® #	A2234290
Price	\$560,000
Bedrooms	4
Bathrooms	4.00
Full Baths	3
Half Baths	1
Square Footage	1,866



Acres	0.16
Year Built	2001
Type	Residential
Sub-Type	Detached
Style	2 Storey
Status	Active

### **Community Information**

Address	6 Aspen Landing
Subdivision	Aspen Creek
City	Strathmore
County	Wheatland County
Province	Alberta
Postal Code	T1P 1R4

### **Amenities**

Parking Spaces	4
Parking	Double Garage Attached, Parking Pad
# of Garages	2

### **Interior**

Interior Features	Jetted Tub, Pantry, Walk-In Closet(s)
Appliances	Dishwasher, Garage Control(s), Microwave Hood Fan, Refrigerator, Washer/Dryer, Window Coverings, Convection Oven
Heating	Forced Air, Natural Gas
Cooling	Central Air
Fireplace	Yes
# of Fireplaces	1
Fireplaces	Gas
Has Basement	Yes
Basement	Finished, Full

### **Exterior**

Exterior Features	Fire Pit, Private Yard
Lot Description	Back Yard, Backs on to Park/Green Space, Cul-De-Sac, Private
Roof	Asphalt Shingle
Construction	Vinyl Siding, Wood Frame
Foundation	Poured Concrete

### **Additional Information**

Date Listed	June 24th, 2025
Days on Market	16
Zoning	R1

**Listing Details**

Listing Office	Easy List Realty
----------------	------------------

Data is supplied by Pillar 9â„¢ MLSÂ® System. Pillar 9â„¢ is the owner of the copyright in its MLSÂ® System. Data is deemed reliable but is not guaranteed accurate by Pillar 9â„¢. The trademarks MLSÂ®, Multiple Listing ServiceÂ® and the associated logos are owned by The Canadian Real Estate Association (CREA) and identify the quality of services provided by real estate professionals who are members of CREA. Used under license.