

\$749,000 - 228 Aspenmere Circle, Chestermere

MLS® #A2234416

\$749,000

4 Bedroom, 3.00 Bathroom, 1,371 sqft
Residential on 0.13 Acres

Westmere, Chestermere, Alberta

Welcome to 228 Aspenmere Circle – a stunning bungalow nestled in the heart of Chestermere’s sought-after Westmere community with a beautifully landscaped west-facing backyard, ideal for enjoying breathtaking sunsets.

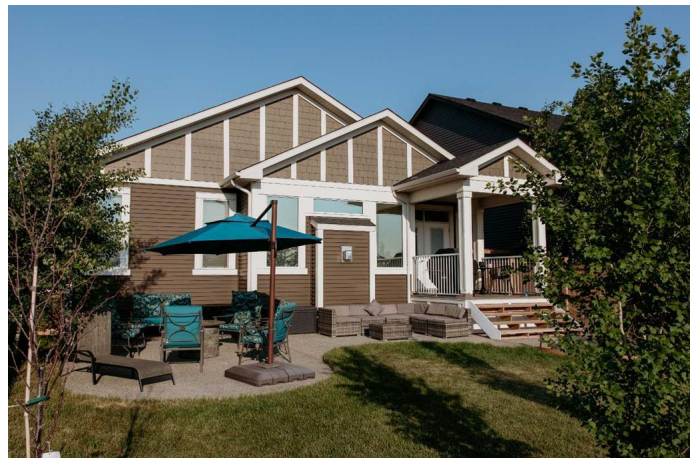
Located on a quiet street and backing onto peaceful green space, this immaculate 4-bedroom, 2.5-bathroom home offers the perfect blend of luxury, comfort, and modern efficiency. Just a short stroll from Chestermere Lake, the amazing COVE BEACH, playgrounds, and dog-friendly areas, this property is a dream for outdoor enthusiasts and families alike.

Inside, you’ll find a spacious main floor featuring a beautiful kitchen and an open-concept living room anchored by a cozy fireplace.

The primary bedroom offers a spa-inspired ensuite with a stand-alone soaker tub and a generous walk-in closet. A second bright bedroom (currently set up as a home office), a stylish 2-piece bath, and a convenient laundry room complete the main level.

The fully finished basement expands your living space with a second large family room, complete with a second fireplace and custom built-ins, plus two additional bedrooms, a full bath, and an oversized furnace/storage room.

Additional features include:



Stainless steel appliance package,

Ceiling speakers wired throughout,

EV charging in the garage,

Rough-in for solar panels.

Meticulously maintained and move-in ready,
this home shows true pride of ownership.
Don't miss your chance to own this
exceptional property – contact your favourite
REALTOR® to book your private showing
today!

Built in 2018

Essential Information

| | |
|----------------|-------------|
| MLS® # | A2234416 |
| Price | \$749,000 |
| Bedrooms | 4 |
| Bathrooms | 3.00 |
| Full Baths | 2 |
| Half Baths | 1 |
| Square Footage | 1,371 |
| Acres | 0.13 |
| Year Built | 2018 |
| Type | Residential |
| Sub-Type | Detached |
| Style | Bungalow |
| Status | Active |

Community Information

| | |
|-------------|----------------------|
| Address | 228 Aspenmere Circle |
| Subdivision | Westmere |
| City | Chestermere |
| County | Chestermere |

| | |
|-------------|---------|
| Province | Alberta |
| Postal Code | T1X0T5 |

Amenities

| | |
|----------------|-----------------------------------|
| Parking Spaces | 4 |
| Parking | Double Garage Attached, Aggregate |
| # of Garages | 2 |

Interior

| | |
|-------------------|---|
| Interior Features | French Door, Kitchen Island, Open Floorplan, Pantry, Quartz Counters, See Remarks, Walk-In Closet(s), Wired for Sound |
| Appliances | Central Air Conditioner, Dishwasher, Garage Control(s), Gas Stove, Range Hood, Refrigerator, Washer/Dryer, Window Coverings |
| Heating | Fireplace(s), Forced Air, Natural Gas |
| Cooling | Central Air |
| Fireplace | Yes |
| # of Fireplaces | 2 |
| Fireplaces | Basement, Family Room, Gas, Mantle, Stone |
| Has Basement | Yes |
| Basement | Finished, Full |

Exterior

| | |
|-------------------|---|
| Exterior Features | BBQ gas line |
| Lot Description | Back Yard, Backs on to Park/Green Space, Landscaped, No Neighbours Behind |
| Roof | Asphalt Shingle |
| Construction | Stone, Vinyl Siding, Wood Frame |
| Foundation | Poured Concrete |

Additional Information

| | |
|----------------|-----------------|
| Date Listed | June 25th, 2025 |
| Days on Market | 16 |
| Zoning | R1 |

Listing Details

| | |
|----------------|-------------|
| Listing Office | Real Broker |
|----------------|-------------|

Data is supplied by Pillar 9â„¢ MLS® System. Pillar 9â„¢ is the owner of the copyright in its MLS® System. Data is deemed reliable but is not guaranteed accurate by Pillar 9â„¢. The trademarks MLS®, Multiple Listing Service® and the associated logos are owned by The Canadian Real Estate Association (CREA) and identify the quality of services provided by real estate professionals who are members of CREA. Used under license.