

# \$729,000 - 14 Waterford Mews, Chestermere

MLS® #A2236152

**\$729,000**

4 Bedroom, 3.00 Bathroom, 2,080 sqft  
Residential on 0.08 Acres

Waterford, Chestermere, Alberta

Welcome to the brand new community of Waterford! This amazing Semi-Detached Front-Drive Garage Duplex is great at a fantastic price point and includes NEW Blinds! This 4-bedroom, 2.5-bathroom is a 2080 square foot home! The main level features a front porch entrance, a Full bathroom with a shower and a Den on the main floor with a closet, chic kitchen with a pantry, a family room and cozy nook. The Upper floor features a nice size primary bedroom with a walk-in closet and 3 piece ensuite and laundry. The basement is ready for your development and has a Separate entrance! Possession will be December 2025. Call to book your private showing today!

Built in 2025

## Essential Information

|                |                        |
|----------------|------------------------|
| MLS® #         | A2236152               |
| Price          | \$729,000              |
| Bedrooms       | 4                      |
| Bathrooms      | 3.00                   |
| Full Baths     | 3                      |
| Square Footage | 2,080                  |
| Acres          | 0.08                   |
| Year Built     | 2025                   |
| Type           | Residential            |
| Sub-Type       | Semi Detached          |
| Style          | 2 Storey, Side by Side |

**WATERFORD, CHESTERMERE**



**MOVE-IN READY!**  
**\$729,000**  
SUMMER/FALL 2025



**Aspen Duplex**  
Welcome to the brand new community of Waterford! This amazing Semi-Detached Front-Drive Garage Duplex is great at a fantastic price point and includes NEW Blinds!

- Chic Kitchen
- Main floor full bath
- Side Entrance
- Large Bonus room
- Front Porch

**ASPEN**

-  4 Bedrooms
-  3 Bathroom
-  Full Main Bathroom

 403-402-3346  
 Manjot Mangat

 Manjot@prominenthomes.ca  
 prominenthomes.ca

 Showhome Address:  
241 Waterford Heath



|        |        |
|--------|--------|
| Status | Active |
|--------|--------|

## Community Information

|             |                   |
|-------------|-------------------|
| Address     | 14 Waterford Mews |
| Subdivision | Waterford         |
| City        | Chestermere       |
| County      | Chestermere       |
| Province    | Alberta           |
| Postal Code | T1X3B4            |

## Amenities

|                |                        |
|----------------|------------------------|
| Parking Spaces | 2                      |
| Parking        | Double Garage Attached |
| # of Garages   | 2                      |

## Interior

|                   |                                                                                                                              |
|-------------------|------------------------------------------------------------------------------------------------------------------------------|
| Interior Features | Double Vanity, Kitchen Island, No Animal Home, No Smoking Home, Open Floorplan, Pantry, Separate Entrance, Walk-In Closet(s) |
| Appliances        | Dishwasher, Electric Range, Microwave Hood Fan, Refrigerator                                                                 |
| Heating           | Forced Air                                                                                                                   |
| Cooling           | None                                                                                                                         |
| Fireplace         | Yes                                                                                                                          |
| # of Fireplaces   | 1                                                                                                                            |
| Fireplaces        | Electric                                                                                                                     |
| Has Basement      | Yes                                                                                                                          |
| Basement          | Exterior Entry, Full, Unfinished                                                                                             |

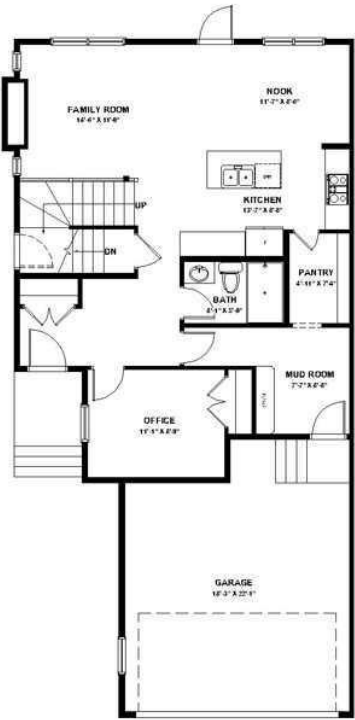
## Exterior

|                   |                            |
|-------------------|----------------------------|
| Exterior Features | Lighting                   |
| Lot Description   | Back Yard, Rectangular Lot |
| Roof              | Asphalt Shingle            |
| Construction      | Wood Frame                 |
| Foundation        | Poured Concrete            |

## Additional Information

|                |                |
|----------------|----------------|
| Date Listed    | July 4th, 2025 |
| Days on Market | 53             |
| Zoning         | R-3            |

## Listing Details



Data is supplied by Pillar 9â„¢ MLSÂ® System. Pillar 9â„¢ is the owner of the copyright in its MLSÂ® System. Data is deemed reliable but is not guaranteed accurate by Pillar 9â„¢. The trademarks MLSÂ®, Multiple Listing ServiceÂ® and the associated logos are owned by The Canadian Real Estate Association (CREA) and identify the quality of services provided by real estate professionals who are members of CREA. Used under license.