

# \$619,990 - 217 Chelsea Place, Chestermere

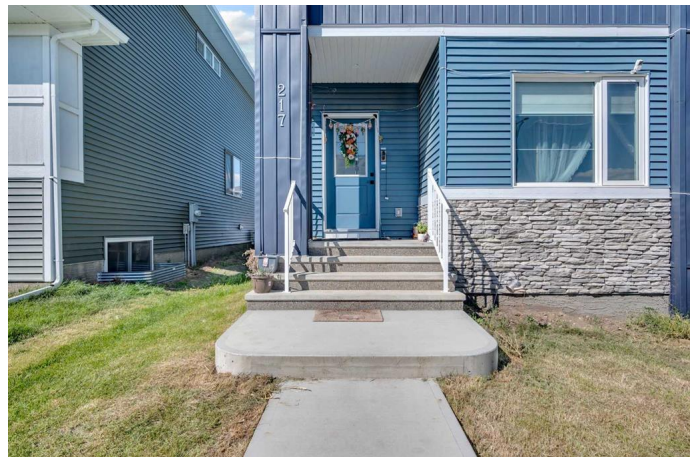
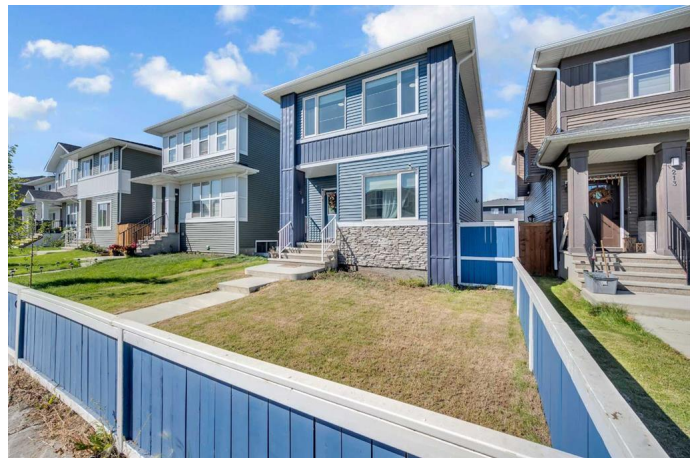
MLS® #A2250395

**\$619,990**

4 Bedroom, 3.00 Bathroom, 1,921 sqft  
Residential on 0.08 Acres

Chelsea\_CH, Chestermere, Alberta

TRADITIONAL LOT | MAIN FLOOR BED & FULL BATH | SIDE ENTRANCE Welcome to 217 Chelsea Pl, a stunning family home nestled in the highly sought-after community of Chelsea, Chestermere. This beautifully presented property masterfully blends modern living with unparalleled convenience, offering an exceptional lifestyle for you and your family. Step inside to discover a bright and welcoming interior boasting nearly 1,921 square feet of total exterior above-grade living space. The main floor features an inviting open-concept layout, highlighted by a spacious living area perfect for entertaining and a well-appointed kitchen equipped with a full suite of appliances including a dishwasher, gas stove, range hood, and refrigerator, making it an ideal space for any home chef. A convenient bedroom and a 4-piece bathroom complete this main level, offering flexibility for guests or a home office. Journey upstairs to find a serene retreat dedicated to relaxation and family time. The upper floor hosts three additional bedrooms, including a luxurious primary suite with a walk-in closet and a private 4-piece ensuite. A second full bathroom and a dedicated laundry room add to the everyday convenience, while a cozy family room provides the perfect space for movie nights. Outside, the property truly shines with its desirable interior lot backing onto a back lane. This prime setting features a generous back yard and a well-maintained lawn, offering a private oasis for summer



barbecues, gardening, or simply watching the children play in a safe, enclosed space. Beyond your new home, the location is second to none. Residents of Chelsea Place enjoy immediate access to a host of community amenities, including picturesque parks, modern playgrounds, and scenic walking paths perfect for outdoor enthusiasts. Families will benefit from the proximity to excellent schools, while shopping centres, diverse dining options, and essential services are just moments away. With easy access to public transit and major commuter routes, this move-in-ready home combines style, functional space, and an incredible lifestyle opportunity, donâ€™t miss your chance to make 217 Chelsea Pl your own!

Built in 2023

**Essential Information**

MLS® #	A2250395
Price	\$619,990
Bedrooms	4
Bathrooms	3.00
Full Baths	3
Square Footage	1,921
Acres	0.08
Year Built	2023
Type	Residential
Sub-Type	Detached
Style	2 Storey
Status	Active

**Community Information**

Address	217 Chelsea Place
Subdivision	Chelsea_CH
City	Chestermere
County	Chestermere
Province	Alberta

Postal Code T1X 2T1

### Amenities

Parking Spaces 2

Parking Off Street, Parking Pad

### Interior

Interior Features Bathroom Rough-in, Closet Organizers, Kitchen Island, No Animal Home, Pantry, Quartz Counters, Separate Entrance, Walk-In Closet(s)

Appliances Dishwasher, Gas Stove, Range Hood, Refrigerator, Washer/Dryer, Window Coverings

Heating Forced Air

Cooling None

Fireplace Yes

# of Fireplaces 1

Fireplaces Electric

Has Basement Yes

Basement Exterior Entry, Full, Partially Finished

### Exterior

Exterior Features Private Entrance

Lot Description Back Lane, Back Yard, Interior Lot, Lawn

Roof Asphalt Shingle

Construction Concrete, Vinyl Siding, Wood Frame

Foundation Poured Concrete

### Additional Information

Date Listed August 25th, 2025

Zoning R-1PRL

### Listing Details

Listing Office eXp Realty

Data is supplied by Pillar 9â„¢ MLS® System. Pillar 9â„¢ is the owner of the copyright in its MLS® System. Data is deemed reliable but is not guaranteed accurate by Pillar 9â„¢. The trademarks MLS®, Multiple Listing Service® and the associated logos are owned by The Canadian Real Estate Association (CREA) and identify the quality of services provided by real estate professionals who are members of CREA. Used under license.