

\$649,900 - 10732 Maplebend Drive Se, Calgary

MLS® #A2252251

\$649,900

4 Bedroom, 3.00 Bathroom, 1,247 sqft

Residential on 0.14 Acres

Maple Ridge, Calgary, Alberta

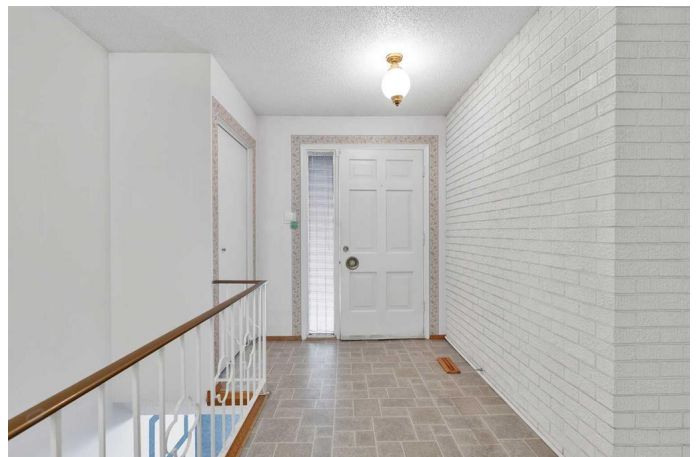
Welcome to Mapleridge, one of Calgary's most desirable and established communities. This charming 1,247 square foot bungalow sits on a generous 60+ foot wide lot on a quiet, family-friendly street. Ideally located just minutes from schools, shopping, public transit, major roadways, recreation centres, golf courses and more, this home offers both convenience and potential. Inside, the layout is mostly original and filled with natural light, featuring a spacious living room with a cozy wood-burning fireplace that flows into the dining area, a large kitchen with a movable island overlooking a sunny rear deck, a good-sized primary bedroom with a private 2-piece ensuite, two additional bedrooms, and a 3-piece main bathroom. The fully developed lower level includes a large rec room with a gas fireplace, an additional bedroom (non-egress window), a 3-piece bathroom, a dedicated storage room, and a laundry/utility area. Outside, you'll find an oversized double attached garage and room for RV parking. This is a rare opportunity to own in a sought-after neighbourhood with endless potential—call today to book your private viewing!

Built in 1967

Essential Information

MLS® # A2252251

Price \$649,900



Bedrooms	4
Bathrooms	3.00
Full Baths	2
Half Baths	1
Square Footage	1,247
Acres	0.14
Year Built	1967
Type	Residential
Sub-Type	Detached
Style	Bungalow
Status	Active

Community Information

Address	10732 Maplebend Drive Se
Subdivision	Maple Ridge
City	Calgary
County	Calgary
Province	Alberta
Postal Code	T2J 1X5

Amenities

Parking Spaces	4
Parking	Double Garage Attached, Garage Faces Front, On Street
# of Garages	2

Interior

Interior Features	No Animal Home, No Smoking Home
Appliances	Electric Stove, Garage Control(s), Microwave Hood Fan, Oven-Built-In, Refrigerator, Washer/Dryer, Water Softener, Window Coverings
Heating	Forced Air, Natural Gas
Cooling	None
Fireplace	Yes
# of Fireplaces	2
Fireplaces	Family Room, Gas, Living Room, Wood Burning
Has Basement	Yes
Basement	Finished, Full

Exterior

Exterior Features	Lighting, Playground, Private Yard
-------------------	------------------------------------

Lot Description	Back Lane, Front Yard, Rectangular Lot, Street Lighting
Roof	Asphalt Shingle
Construction	Wood Frame, Wood Siding
Foundation	Poured Concrete

Additional Information

Date Listed	September 2nd, 2025
Days on Market	1
Zoning	R-CG

Listing Details

Listing Office	RE/MAX Real Estate (Mountain View)
----------------	------------------------------------

Data is supplied by Pillar 9â„¢ MLS® System. Pillar 9â„¢ is the owner of the copyright in its MLS® System. Data is deemed reliable but is not guaranteed accurate by Pillar 9â„¢. The trademarks MLS®, Multiple Listing Service® and the associated logos are owned by The Canadian Real Estate Association (CREA) and identify the quality of services provided by real estate professionals who are members of CREA. Used under license.